



**NORTHAMPTON
INTERNATIONAL
ACADEMY**

**NIA6
Prospectus**



WELCOME FROM THE HEADTEACHER

Situated within Northampton, we offer a wide range of A level and BTEC courses for school leavers in our new sixth form centre NIA6.



Martin Serráo Executive headteacher

Our teachers are all highly skilled professionals and experts in their fields; therefore, their focus is firmly on making sure that all our students achieve exceptional examination and vocational results.

We are a highly inclusive and vibrant sixth form, proud of the diversity that exists among our staff and students. Visitors to sixth form often comment on the friendly, welcoming and positive atmosphere they experience here. We believe that this comes from our strong sense of community, characterised by warm and

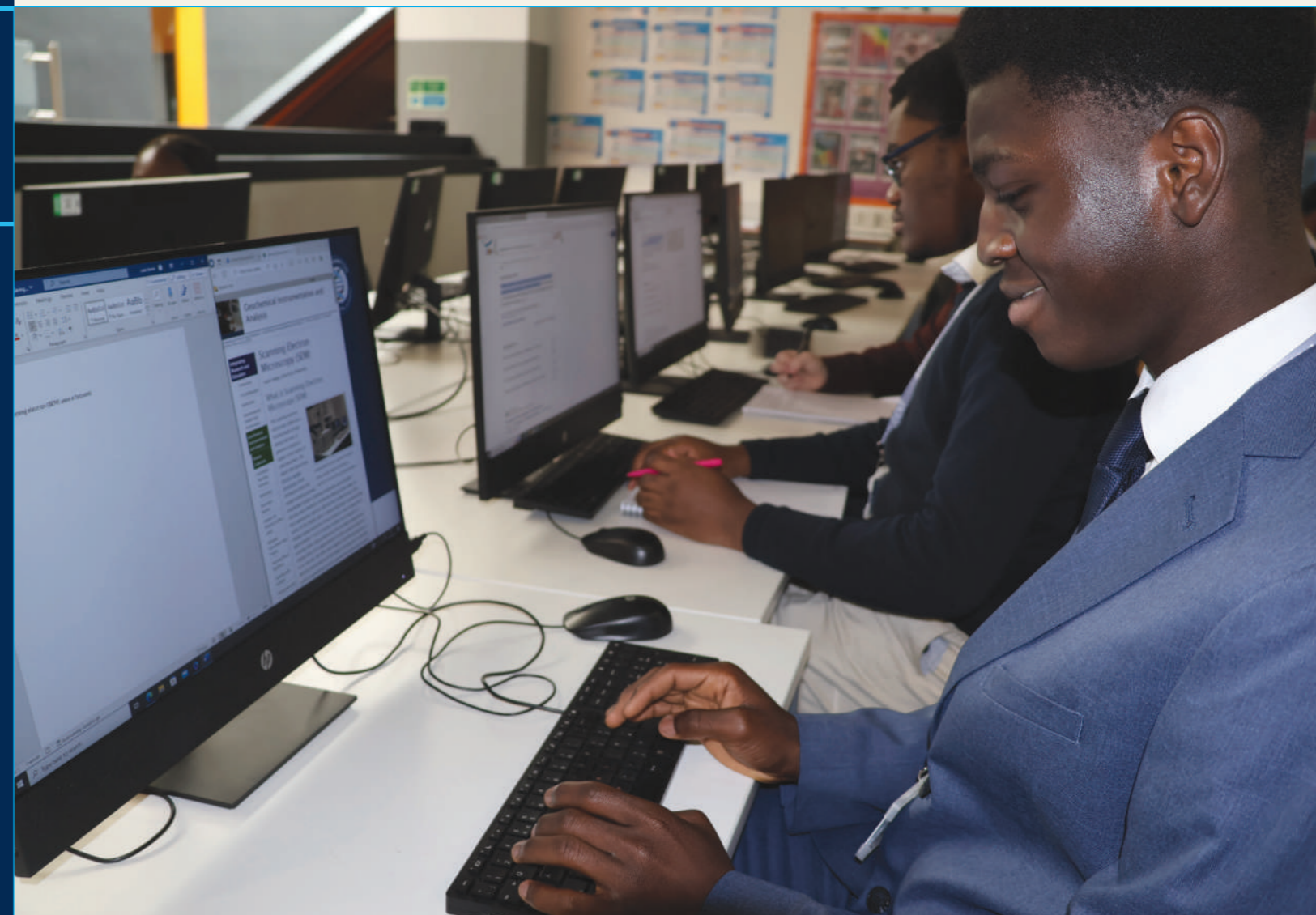
respectful relationships between staff and students. Northampton International Academy is a place where you will be expected to work hard, but where you will also be given plenty of opportunities to develop new skills, undertake work experience with many of our partners, make new friends and get involved in a range of extracurricular activities.

If you join us, we'll offer an outstanding sixth form experience, helping you to successfully make the transition to higher education or employment. We do this by treating students as adults,

working with them to take ownership of their learning and plan their future.

Whatever your background, we will treat you as an individual, be ambitious for you and broaden your horizons. Above all, we will do everything we can to help you reach your full potential.

Whether you're a prospective student, member of staff, parent/carer, member of the public or already a member of the academy, we hope you find the information you need. If not, please do not hesitate to get in touch.



PATHWAYS

Students at NIA6 enjoy high-quality teaching across a range of courses, enabling students to achieve excellent results and progress to their chosen future pathways. We pride ourselves on the wide range of courses we offer, including A level and vocational qualifications, and results are strong across all subjects.

The excellent grades achieved by the cohort reflect the positive impact of subject-specialist teachers and the wraparound support students receive from their tutors and the sixth form team.



Northampton International Academy is an all-through school, taking students from reception to sixth form. We expect the highest standards of conduct from all post-16 students. As the most senior members of the academy, our sixth form students are important role models for all younger year groups.

Sixth form students are required to dress in business attire in accordance with our dress code. We also have high expectations of student attendance, aiming for 97%, because low attendance impacts negatively on student performance.

Attendance is monitored by tutors and the sixth form team, who track attendance to school, individual lessons and tutor time, plus student punctuality.

It is important that sixth form prepares students for the expectations employers will have of them in the workplace and the high standards we set are key to this preparation.

The transition from GCSE to post-16 study is significant. To be successful, it is important that students adopt the right attitude towards their studies and sixth form life.

A levels and level 3 vocational courses require students to demonstrate understanding and apply knowledge, develop arguments and support these with evidence rather than memorising facts and case studies.

Independent study is essential to success and this is expected to be undertaken in addition to homework set by teachers. Students have access to a computer suite, a silent study room, laptops, textbooks and a range of articles relating to their courses in the sixth form area. They are encouraged to use these, plus the school library, for the completion of independent reading, research, revision and preparation for lessons.

Dedicated study lessons are timetabled for students to complete independent work. Students on practical courses, such as art, also have access to studio space where they may keep practical work to revisit during study time.

SIXTH FORM LIFE

A-LEVEL PATHWAY

Studying 3 or 4 facilitating A-Level subjects.
Traditional courses that are assessed using written exams. Some may also require coursework elements.

Ideal for learners who perform well in exams.

Biology
Chemistry
Maths
Business

Post-18 Progression:
University
Degree Apprenticeship
Employment

COMBINED STUDIES

Studying a mixture of A-Level and Level 3 BTEC Subjects

Combines facilitating A-Level courses with vocational, project-based tasks (equivalent to A-Levels).

Ideal for learners who perform well in exams and coursework and want a wider range of subject options

Level 3 BTEC Diploma in Applied Science (worth two A-Levels)
Level 3 BTEC Health and Social Care
Level 3 BTEC Sport

Post-18 Progression:
University
Degree Apprenticeship
Employment

BTEC PATHWAY

Studying 3 BTEC subjects.

Focusing on unitised courses that include coursework and written exams.

Ideal for learners who perform better in unitised courses with greater focus on coursework.

Level 3 BTEC Diploma in Applied Science (worth two A-Levels)
Level 3 BTEC Health and Social Care
Level 3 BTEC Sport

Post-18 Progression:
University
Degree Apprenticeship
Employment

TRANSFORMING FROM L2 TO L3

Studying one Level 2 (GCSE) alongside L3 Applied Science double award.

Learners also have the opportunity to resit GCSE English or Maths.

Ideal for learners who want to progress onto Level 3 courses but aren't quite ready to make this full step up yet.

Level 2 Travel and Tourism
Level 3 Applied Science

Post-18 Progression:
A-Levels/BTECs
HNC/HND
Level 3
Apprenticeship
Employment

THE HOUSE TEAM

Ruby



Sapphire



Diamond



Emerald



Amethyst



Amber



Northampton International Academy is divided into six Houses: Ruby, Sapphire, Diamond, Emerald, Amethyst and Amber.

These Houses continue in sixth form, with each tutor group belonging to a specific House. We encourage key stage 5 learners to participate fully in House competitions.

Each form elects its own Student House Captain who works with the staff House Team to plan and organise House competitions for sixth form and lower year groups. The House Captains play a significant role in supporting school wide events such as sports day and charity days.



LIFE SKILLS



We are committed to developing the whole student through consistently outstanding lessons across a broad curriculum, facilitating independent study, developing leadership skills and providing a range of enrichment opportunities.

At Northampton International Academy, we value a wider curriculum of Personal Development including learning about relationships, health, personal finances and careers. Therefore, all timetables include one dedicated PSHE lesson per fortnight. The learning from these lessons is a key element of the Life Skills certificate all NIA sixth form students work towards. Our weekly assemblies will also cover key aspects of Personal Development and Fundamental British Values.

Successful completion of the Life Skills Certificate requires students to have actively participated in enrichment, community and society/committee elements.

“

We have the opportunities to contribute to the wider school, helping our peers in Primary and Secondary, which helps support our UCAS applications.

”



“

The facilities are unique, which prepares us for university life.

”



ENRICHMENT

Enrichment electives for the year beginning September 2024* are:

- Art and design skills
- Core PE
- Digital literacy
- British Sign Language
- Performing arts skills (including presentation, interview and public speaking skills)

*All electives are subject to staff availability.

One afternoon per week is dedicated to elective recreational study. Students will choose a specific area to focus on each term. They may choose to continue with the same elective each term, but we encourage students to choose at least two different areas each year to develop a wider range of skills that can be added to future applications and personal statements.



ARTS AWARD

Arts Award inspires young people to grow their arts and leadership talents: it's creative, valuable and accessible.

Through the Arts Award, young people get actively involved in creative activities and produce their own artwork. Those working towards the higher levels collaborate with artists to try a genre or art form new to them too.



SIGN LANGUAGE

British Sign Language can be taken without any previous experience at any level. This pathway allows learners to gain basic skills and confidence in the two areas of production and reception of British Sign Language.

There are many benefits to learning sign language. It not only allows you to communicate effectively with the deaf community, but it can set you apart professionally, as it is a sought-after skill.



DIGITAL LITERACY

It's essential in today's society to be digitally literate. 82% of UK jobs require digital skills and 79% of UK leaders say that candidates with a high degree of digital literacy are more desirable employees.

These sessions will focus on using Microsoft Applications such as formatting in Word and using formulas in Excel. The sessions will also develop students' use of digital technology to find, evaluate and communicate information.

CORE PE

Physical Education allows students to develop outside of the classroom, providing opportunities to work with peers in a practical setting and offering the freedom to explore existing and hidden talents.

The Core PE pathway allows students to focus on physical, social, cognitive and fitness development through participation in a broad range of sports and physical activities.



Creative Media

Alongside these specific sessions, sixth form students at NIA6 also benefit from a range of events, workshops and visits. Throughout the year, students have the opportunity to sign up to a variety of wider and extracurricular activities.

- Medical Mavericks interactive workshops
- David Hyner Stretch Development session on revision and memory skills
- Workshops on personal and student finance
- FUZE Technologies workshop on careers in the digital industry
- Expressing ideas through art with a visiting artist
- Developing portfolios for interviews
- Working with our primary phase
- Crime Scene to Courtroom interactive workshop on working in the criminal justice system
- National Apprenticeship and University Show
- Visits to University of Northampton
- Workshops on UCAS and apprenticeships
- Workshops on writing personal statements and interview techniques
- Work Experience Week

ENGAGEMENT

We believe it is important for our students to give back to their school and local community as much as possible, something reflected by our character drivers. As role models within the school and representatives outside of it, our Year 12 and 13 students have significant influence, and we aim to harness this into positive contributions to school and wider community life.

At the beginning of each term, students will sign up to a specific community engagement role. They may choose to change role at the end of each term to try a range of activities, or they can remain in the same role if they prefer. Each community engagement role will be undertaken under the supervision and guidance of specific staff members, who will confirm student participation each week and complete an evaluative reference for each student at the end of the term.

Some community engagement roles take place at lunch or break times. When this is the case, students will have the opportunity to get food during a study period just before or just after break time. They will also be given back at least one study period of community engagement to make up for working during break and lunch times.

With competition for university places, degree apprenticeships and paid employment increasingly high, it is important that students develop a broad range of attributes, interests and achievements.

Example community engagement roles include:

- Primary phase readers
- Library assistants
- Classroom teaching assistants (in a subject area of their choice dependent on department need)
- Primary break and lunchtime assistants
- Secondary break and lunchtime assistants
- Science technician assistants
- Sixth form terrace gardeners
- Display board creators and monitors

Making the choice of where to go and what to study after GCSEs can be daunting for many students and the adjustment from level 2 to level 3 study is hard. We recognise this transition may be difficult for students, especially those new to Northampton International Academy, and ensure that pastoral care and support is a key focus throughout Years 12 and 13.

The DNA of NIA is integral to every year and this is continued in the sixth form where our character drivers are signposted and celebrated in end-of-term award events.

Every student belongs to a tutor group and attends focused Tutor time for 30 minutes at the end of every day. Tutors are the first point of contact for students and parents/carers, and are essential support for future applications, personal statement writing and references.

Tutor time is also used to deliver essential PSHE sessions dealing with topics including healthy lifestyles, relationships, mental health, British values, Prevent, online safety, crime and the justice system, sexual health and addiction.

Alongside their tutors, sixth form students also receive pastoral care and support from the Head and

Assistant Head of Sixth Form who are available to assist with course choices, bursaries, UCAS and other applications, references and other day-to-day issues. The Assistant Head of Sixth Form is also the Designated Safeguarding Lead and is highly experienced in dealing with safeguarding issues in a sensitive and timely manner.

For some, financial difficulties present a barrier to sixth form study due to travel, food and resource costs. We operate the ESFA bursary scheme at NIA to ensure no students are in a position where they cannot travel to the academy, eat during the day and purchase the necessary books and equipment required to study their courses. Once enrolled, students can apply for the bursary by completing a simple form and providing the required evidence of household income and/or benefits.

PASTORAL CARE

FUTURE PATHWAYS

One of the most important aspects of level 3 study is preparing for post-18 pathways. At NIA6, we dedicate time to each of our students to ensure they have clear goals and understand the steps required to reach these.

UCAS AND UNIVERSITY ASPIRATIONS

Students receive advice and guidance from their form tutors and the sixth form team. The NIA sixth form team has excellent knowledge and experience of university applications and offers outstanding support and guidance to all university applicants. We also work closely with our well-established links at University of Northampton to offer additional support with UCAS applications including guidance on writing personal statements, mock interview practice and workshops on how to build a portfolio.

Students attend higher education fairs and university visits to develop their understanding of university life and opportunities available to them. We have an excellent relationship with Oxford University via Lincoln College and NIA students benefit from bespoke presentations on Oxford applications as well as subject specific workshops with Oxford University lecturers.

Our close work with University of Northampton has resulted in trips to the campus, workshops in medicine and social science degrees, and visiting lecturers. Students have benefited from seminars on note-taking, working independently and revision strategies.

We are continually developing new partnerships with a range of universities including Leicester, Winchester and the Russell Group, which will include trips to these institutions and visits from lecturers.

University is not the right choice for all students and NIA sixth form is committed to offering excellent guidance and preparation for alternative pathways. As well as being able to book office appointments with the academy careers advisor, sixth form students benefit from dedicated post-16 careers appointments and events.

Degree level apprenticeships are becoming increasingly popular and are an excellent alternative to reading at university. With such high demand for places, students need excellent and early applications, which they are guided through by their tutors, the sixth form team and careers advisor.

Sixth form students attend career and apprenticeship fairs, either virtually or in person, which cover a wide range of different industries, including the Army, hospitality, finance, retail, marketing and communications. We also work closely with University of Northampton to offer student on-campus experience days with workshops tailored to their future aspirations.

CAREERS AND DEGREE APPRENTICESHIPS



East Midlands Academy Trust

Northampton International Academy is part of the **East Midlands Academy Trust**, which currently has seven schools across Northamptonshire and Milton Keynes: one all-through school, one secondary school and five primary schools.



VISION, VALUES AND PURPOSE

The East Midlands Academy Trust is driven by a strong moral purpose that every child has the right to outstanding teaching and leadership.

It is our mission to work with our children, their parents and carers, and our staff to create excellent schools. Schools that demonstrate integrity of purpose through high aspiration for every child.

We set high expectations for our leaders and teachers to support and stretch every child. We ensure that they make excellent progress and build the skills, knowledge and attributes that will prepare them well for the next stage in their life.

'Every child deserves to be the best they can be.'

www.emat.uk



NORTHAMPTON INTERNATIONAL ACADEMY

NIA6

Billing Road
Northampton
NN1 5AU

01604 212811

info@nia.emat.uk

nia.emat.uk